

OUR MISSION STATEMENT IS PROFOUND SHORT AND SIMPLE

"TO BE CREATIVE WHILE BUILDING COMMUNITY"



DAG

DALLA ATWI GROUP

FOREST MANAGEMENT ARCHITECTURAL DESIGN



DAG
DALLA ATWI GROUP
FOREST MANAGEMENT ARCHITECTURAL DESIGN

IN SPOT LIGHT

INTRODUCTION

DAG Africa

Forestry Management, Architectural Design

DAG Africa is a dynamic and professional forestry and logging company. Our office won several engineering awards in interior and architectural design, we will shed light on this area at the end of the explanation below.

DAG Africa is a dynamic and professional forestry and logging company.

Many years of experience and strategic operations have secured the company's most prestigious reputation in the West African region.

It has also earned the confidence of all its customers to work on many projects to open and construct mountain and forest roads in more than one country around the world, and most are Africa.

The company's capable and highly trained team led by qualified management provides logging services, transportation and logistics services.

DAG Africa providing a wide range of woods/lumber to the world. Through our highly equipped land fleet, we manage the full services. The company has evolved and taken big directions in adapting to the highly growing requirements of the wood industry whilst respecting and ensuring sustainability of our forestry.

Our strengths lie in our ability to provide and end-to-end integration no matter the complexity. From the harvesting of raw material till the export of our products, we strive to overcome constraints, mitigate any risk and deliver in a timely fashion to ensure that your business goals and business requirements are achieved.

DAG Architectural Interior Design

Is a multi-award winning design firm. Initially based in -AD DOHA-Qatar, the firm had the opportunity to acquire extensive experience in designing and developing high-rise buildings in a many countries around the world , like ,Beirut , Spain , Africa , Iraq, Qatar.

Over the years, DAG Architects have generated many significant projects, all underlined by a commitment to sustainable systems and a modern aesthetic sense that embraces constantly the historical and cultural context of each project.

Our Services



How can DAG help your business?



Photo from Action at forest



WOODEN PRODUCTS

LOGS AND TIMBER WORKS

WITH OVER 20 YEARS OF EXPERIENCE IN THE WOOD SECTOR, OUR HIGHLY MATURE MANAGEMENT AIMS TO ACHIEVE EXCELLENCE IN THE SUPPLY OF OUR PRODUCTS AND AS A RESULT LOOK TO INVEST IN OUR TEAM AND ASSETS FOR THE IMPROVEMENT OF OUR WORKS. WE RELY ON INTERNATIONALLY RECOGNIZED EXPERT PARTNERS FOR THIS

AUTONOMY OF PRODUCTION

FOREST REGULATORY COMPLIANCE

EXPLOITATION OF THE FOREST POTENTIAL

RECRUITMENT AMONG LOCAL COMMUNITIES



Wood production of a full range of products from its own forest concessions in the Cameroun



Transport and shipping to world wide of a full range of wooden products



For its whole production of logs – timber – veneer – processed products, DAG Africa can commit both on quality and respect of all sustainability factors towards the environment.”

CAMEROON'S TYPES WOOD

Cameroon is a country in Central Africa which is known for its dense forests and varied wildlife. With forest lands expanding in around 18.8 million hectares of area, Cameroon hosts Africa's biggest forest range. Around 40% of the country is covered by dense forests, which make Cameroon a popular choice for premium quality natural wood.



“ Dalla Atwi Group is in charge of the production, transformation and marketing of a full range of products from its own forest concessions in the Cameroun.

For its whole production of logs – timber – veneer – processed products, DAG Africa can commit both on quality and respect of all sustainability factors towards the environment. ”

OUR EXPERIENCE

DAG one of the companies in Cameroon that provide good quality timber wood to businesses in surrounding areas, however, if you are looking for an international timber exporter company that can deliver quality wood log or timber/lumber as per your requirements and on time, you should definitely reach us.

PHOTO-MACHINES IN DUTY



WOODEN PRODUCTS

Today, building "green" is a very good solution. As a building material, wood offers many environmental benefits that matter to communities across the country. It is the only major building material that is renewable and sustainable. Compared with concrete and steel, wood products help to increase a building's energy efficiency and minimize the energy consumed throughout the life of the product. Using wood also helps keep carbon out of the atmosphere, helping to mitigate climate change. Trees store carbon dioxide as they grow. After harvest, wood products continue to store much of this carbon. These benefits continue when wood is reclaimed to manufacture other products. The wood is a better way to build.



Valuable information about wooden use and lumbering

CASE STUDY: EL DORADO HIGH SCHOOL, EL DORADO, ARKANSAS

One of the first schools in Arkansas to make extensive use of wood, El Dorado High School, was constructed with 153,265 cubic feet of lumber, panels and engineered wood, which stores 3,660 metric tons of carbon.

By using wood instead of more fossil-fuel-intensive materials like steel and concrete, the building's designers avoided 7,780 metric tons of carbon emissions – equivalent to keeping 2,100 cars off the road for a year, or operating a single-family home for 970 years.

Wood can improve energy efficiency. An excellent insulator, wood has a cellular structure that allows for air pockets, helping to slow the conductivity of heat. Wood products store carbon, helping to mitigate climate change while also providing a good alternative for materials that require large amounts of fossil fuels to produce. Using wood helps to sustain our forests and increases our carbon storage potential by helping to ensure that it is affordable for forest owners to continue sustainably managing their forestland

- Pachiloba
- Wengue
- Bilinga
- Padouk
- Bubinga
- Iroko
- Ebene
- Bibolo
- Makore
- Mouabi
- Frake Noir
- Frake Blanc
- Tali
- Sapelit
- Azobe
- Sipo
- Atui
- Doussie
- Movingui



Wood is better for the environment in terms of greenhouse gas emissions, air and water pollution, and other impacts. Steel and concrete consume 12% and 20% more energy, emit 15% and 29% more greenhouse gases, and release 10% and 12% more pollutants into the air, and generate 300% and 225% more water pollutants than wood, respectively. Wood helps reduce energy consumption across the life cycle of growth, harvest, transport, manufacture and construction compared to other structural building products according to life cycle assessment (LCA).

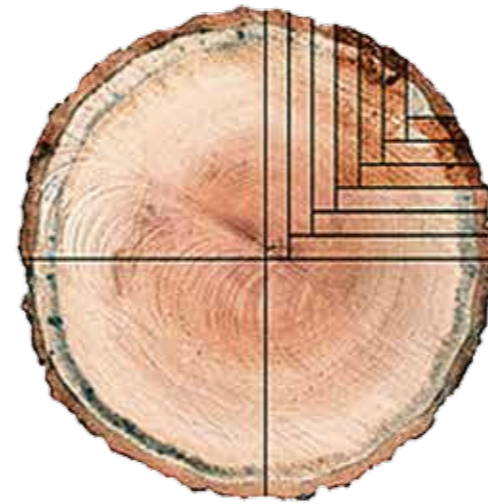
PHOTO-WOOD SECTION



Plain Sawn



Quarter Sawn



Rift Sawn



Live Sawn



OUR PLANTS



Dryer, Normal drying aims to dry timber to about 18% moisture content so called shipping dry. The goal is to lower the Moisture content of the wood without wood cracking and to such moisture content that can be stored or transported Without damage. As drying wood shrinks, the cutting process must therefore be done with excess in relation to the final Product dimensions.



Sawmill, DAG machine or plant with power-driven Machines for sawing logs into rough-squared sections Or into planks and boards as per our world wide Customer requirements. Our sawmill equipped with Planing, moulding, tensioning, and other machines for Finishing processes. Our biggest mills are usually Situated where timber can be brought by river or rail, And the design of the mill is affected by the mode of transportation. Here DAG sawmill can cut , trim to any Size as per customer need



Some of the internal shipping methods are via river or sea

The Global shipping movement of wood logs,timber and wood products has cause of necessary of its freedom from pests And diseases,in most countries worldwide, which risk the agricultural resources of the importing country. Hence, the phytosanitary, fumigation measures are required to be in place to prevent the entry of pests into the country, cargo Destination.



LOG YARDS Storage capacity 10.000

Our log yards spread throughout Cameroon with our multi-partnerships with the larger wood exporters. Logs are unloaded, stored and prepared for export and the sawmill here. The capacity of the storage ensures our ongoing service and business.

DAG team together with our professional partners can help you execute-the fumigation treatment and Provide you with phytosanitary certificate for the country you are exporting to. We do that in each and every export country,serving international traders. Our team is trained and Certified due to the African standard regulations for plant and plant products health,but of course can Operate any other method and regulations as per your needs.

Fumigation=Fumigants=are gaseous forms of chemicals. The imported or exported materials are subjected to fumigation To eliminate the pest risk. The fumigation treatment could be done in the port of loading after the completion of the Loading or during the sailing to the final destination. Fumigant is a chemical which can exist in gaseous state in/at a Required temperature and pressure and is lethal to organisms (insects, animals, plants and other pests) if they are exposed To a sufficient concentration and for a sufficient length of time..



FINAL PRODUCTS

We enable our clients to take part in the material selection process until we find the perfect slab. Clients are encouraged to follow the creation process and invite their friends and family to follow along on one of our social media platforms. Upon completion, we review the commissioned work with the client to ensure all parties are satisfied before we arrange for the piece to be shipped or delivered.



CLIENT REQUIREMENTS

DAG Design Department specializes in one of a kind, hand-crafted pieces of furniture, using high quality, hand selected live edge exotic & domestic wood slabs for your home or commercial needs.

We focus on bringing upscale, modern contemporary design to the live edge artisan industry. While we provide a very High-End Luxury finished product we will work with all budget's big or small, without sacrificing attention to detail or quality. From step one our focus is making all our clients completely satisfied with their project. As artists and craftsman we love the freedom to design something completely custom while staying very dedicated to fulfilling your design needs.

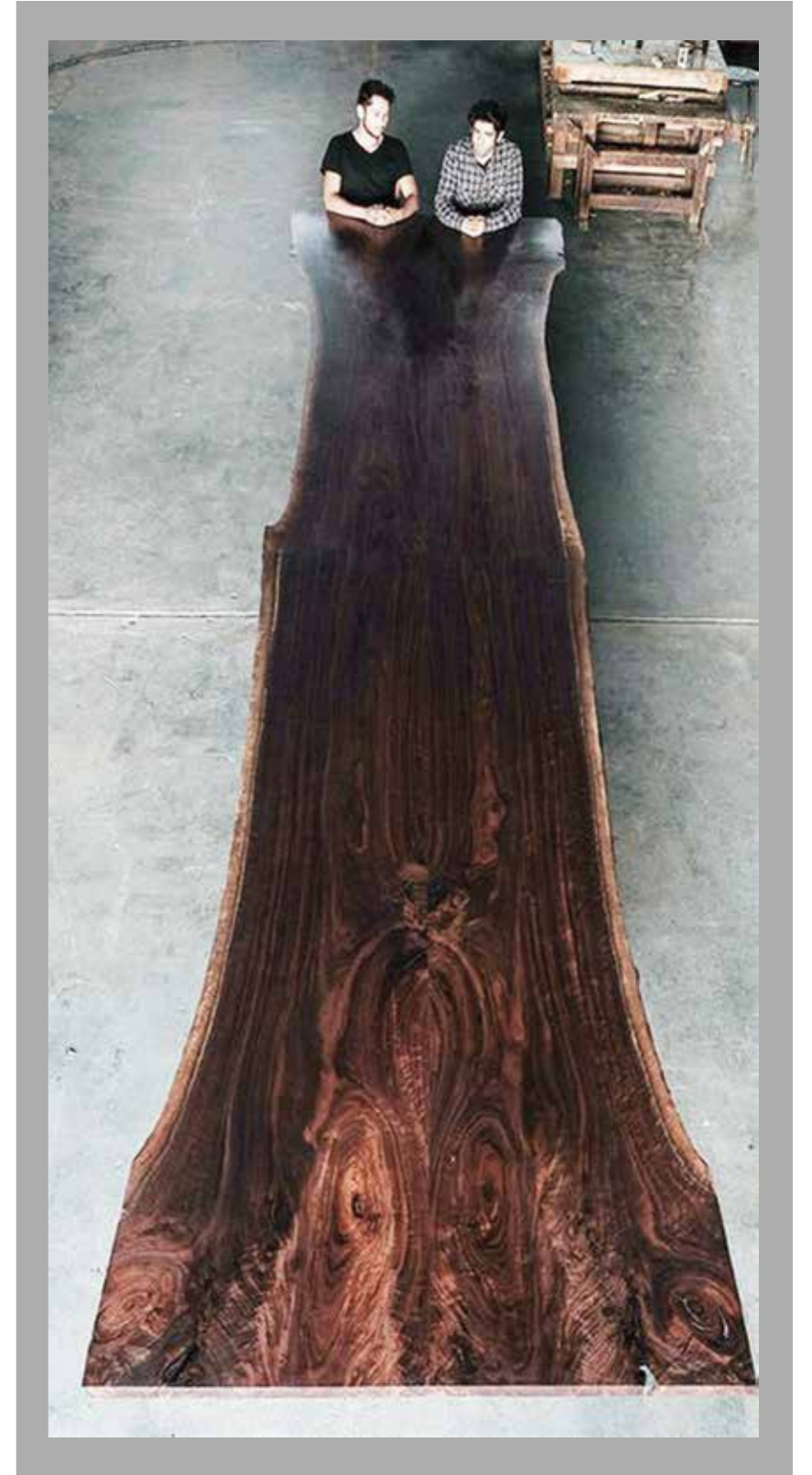


PHOTO-LOG YARDS & FOREST



ARCHITECTURAL

DAG Architects department IS an Architectural Firm, founded in 2011 Which Provides Comprehensive Services in Building Design, Interior Design and Industrial Design. It Has Successfully Completed Many Projects Around the World Like, Dubai, Beirut, France, Iraq, Morocco, Spain, Jordan, India. ECT....



INDIA



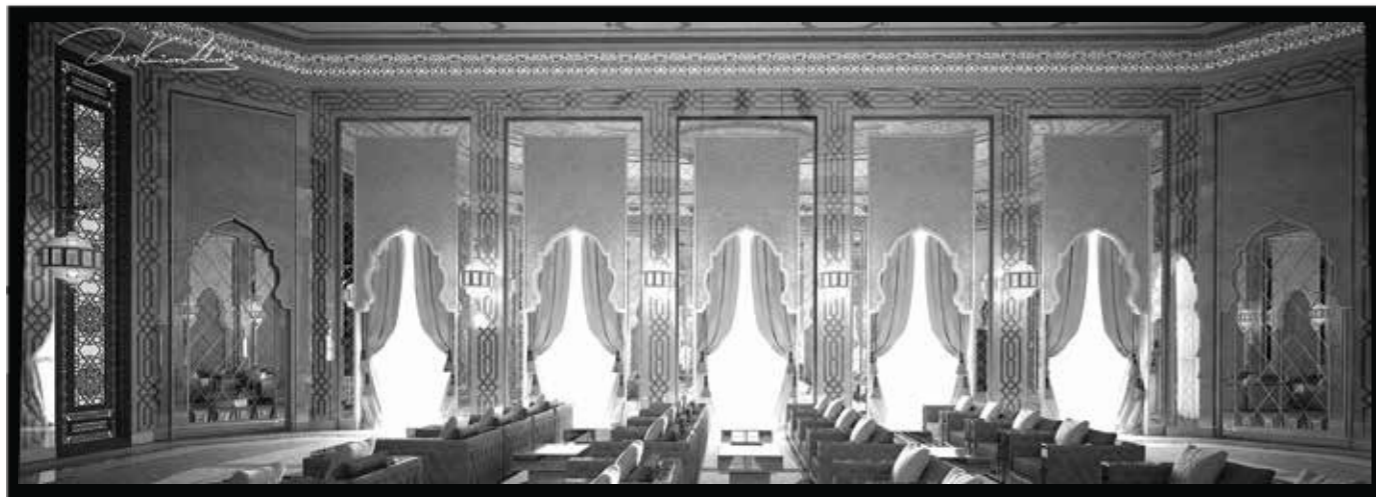
LEBANON



ABU DHABI



DUBAI




INTERIOR DESIGN

The firm's diversified work includes residential commissions ,Hotels, banks, offices, and commercial. Projects range in scale from complete buildings to interiors for private apartments, corporate offices, retail stores, restaurant and architectural detailing. Several projects involving the rehabilitation, restoration and addition to historical structures have been completed by the firm team of approximately seven professionals (architects, interior and structural engineers) has the size, structure and experience to take on complex projects from schematic design to execution phase.



We simply think outside the box!

We strongly believe that the key to success is diversity.

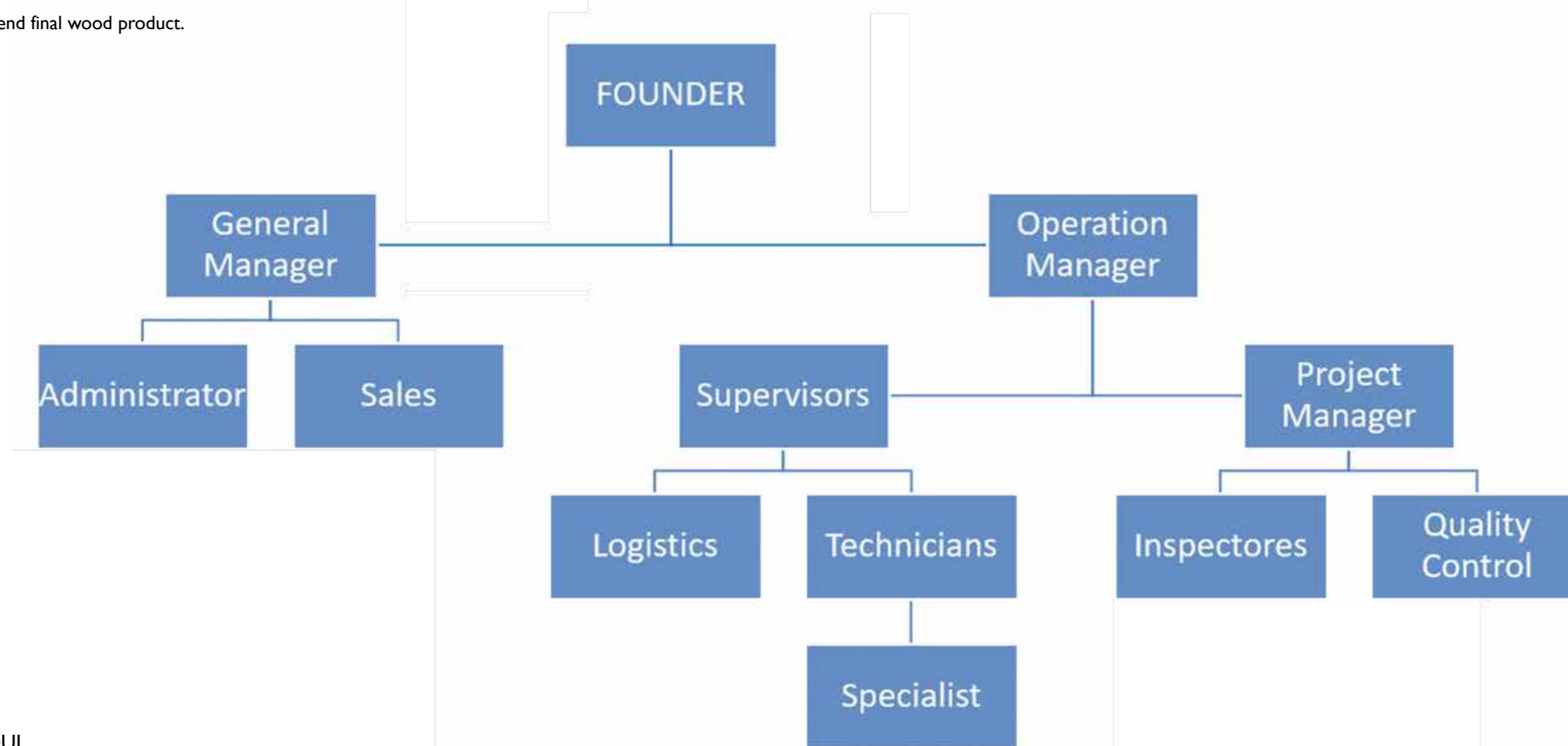


Over the years, DAG Architects have generated many significant projects, all underlined by a commitment to sustainable systems and a modern aesthetic sense that embraces constantly the historical and cultural context of each project.

ORGANIZATION CHART

OMAR ATWI
FOUNDER

Omar Atwi B.A, of Hebariya, Lebanon, is the main visionary and the investor for DAG and is a primary figure in the establishment since 2013. As a licensed Architect with more than 11 year experience, Mr. Atwi specializes in Wood as a product and it's ethical and aesthetic use in our society. He has previously been associated with lumber processing in the MENA region for many years and has also served as a Chairman of private establishments specializing in high end final wood product.



VICTOR DAABOUL
OPERATIONS MANAGER

Victor has been with DAG Africa since the start holding the head position of Operations. And he's a partner at DAG as well, Prior to joining DAG, He was Director of a Leading Logging company in West Africa where he aligned business and customer needs by overseeing large capital investments and supporting the expansion and development through his many years of operational work. Raised in Cameroon, Victor started working in saw forests since a very young age resulting in his highly noticeable experience.

PHOTO-MACHINES IN DUTY



ROAD WORKS SERVICES

In these past years, DAG Africa has seen tremendous growth with successful completion of a significant number of Road Works projects. With every project we strive for continual improvement in its operations, and is committed to maintain its competitiveness in the construction industry while contributing to the well-being of all our esteemed clients.

DAG provides one-stop service to all clients with regard to the design and construction of forest roads and any associated special construction work. A proper road network is an integral and vital part of all forest characteristics. Forest Service to build harvesting methods. We also provide services to electricity and water companies to connect and supply villages with private and government electricity poles and networks by opening roads inside forests and villages while fully preserving the environment, plant life and trees.

In our pursuit of excellence, we have been building a record of solid performance in our field. Holding ourselves to the highest ethical standards in terms of how we do things, we have qualified professionals, top-notch equipment and available finances to successfully complete any size project including both large and smaller jobs.



Africa Cameroon Executing more than 800 km only in the past two years by opening up roads for social services or ways for service extensions such as electricity or transportation.



Dubai United Arab Emirates Our professional team has worked with more than one entity and a company to create and open internal roads in more than one area



Lebanon also had the credit at the outset for this work by creating a lot of road linking agricultural villages in some of them, and roads connecting to olive harvest lands.



As shown on this page, you will find some of our former clients, including large private entrepreneurship companies or directly through government brokers. The work was carried out by our engineers and our professional workforce.


PHOTO-ROAD WORKS SITE



CONTACT US

CAMEROUN, DOUALA

Bonapriso - Douala, Cameroun

 +237 6 98 98 80 80


+237 6 71 42 74 75

 info@dag-africa.com

 www.dag-africa.com

UAE, DUBAI

Free Zone, UAE


 +971 55 155 7778

 info@dag-africa.com

 www.dag-africa.com

LEBANON, BEIRUT

Zouk Musbih, Lebanon

 +961 71 73 79 70

 info@dag-africa.com

 www.dag-africa.com



Thank You